

Pursanova Limited - Kochi Prefectural Haruno Higashi Elementary School

Installed date: April 5th 2005

www.pursanova.com



1st floor pump room S T-1 2 5 L

Entrance still cock

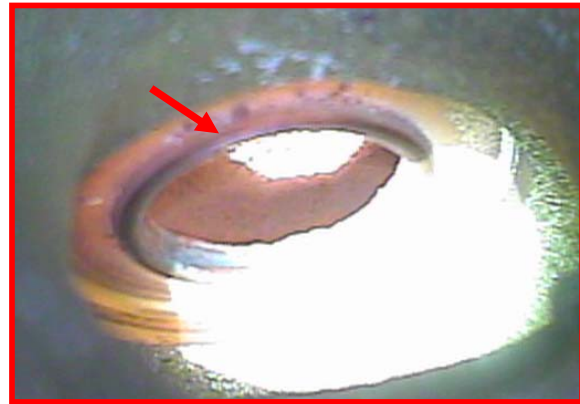
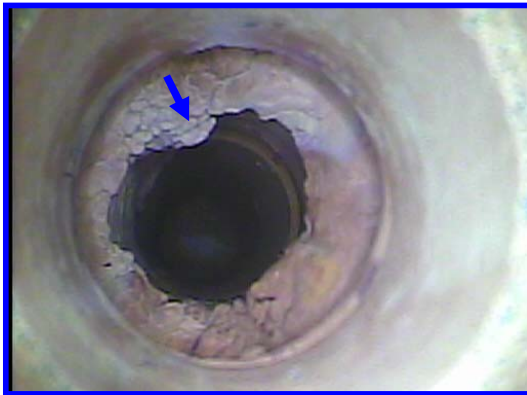


Still cock

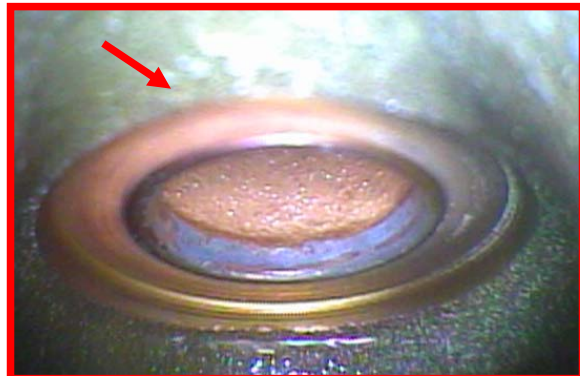
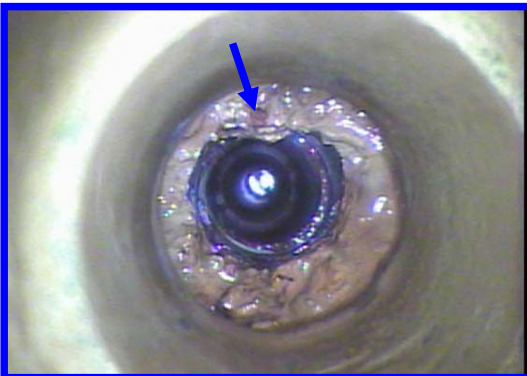
Inside valve

Picture taken 4/5

Still cock drainage



Picture taken 4/28



Rust has dissolved, and black dots have diminished in drainage.

Water tank and pipe Water tank oxygen level



Water tank internal wall and bottom

Arrow, you can see the rust mass



| | | Indoor pump water tank | | |
|------|-------------|------------------------|----------------------------|------------------------------------|
| Date | Temperature | Water Temperature | Saturated-dissolved oxygen | Current saturated-dissolved oxygen |
| 4/5 | 20°C | 14.5°C | 9.76 mg/L | 10.1 mg/L |
| 4/12 | 23°C | 16.2°C | 9.56 mg/L | 10.2 mg/L |
| | | | | |
| | | | | |

1st floor sink

Picture taken September, 2004



Picture taken April 2005



Obvious improvements seen from September to April

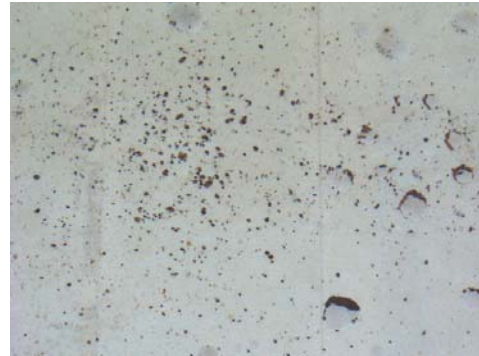


Again, obvious change in the rust and sludge!

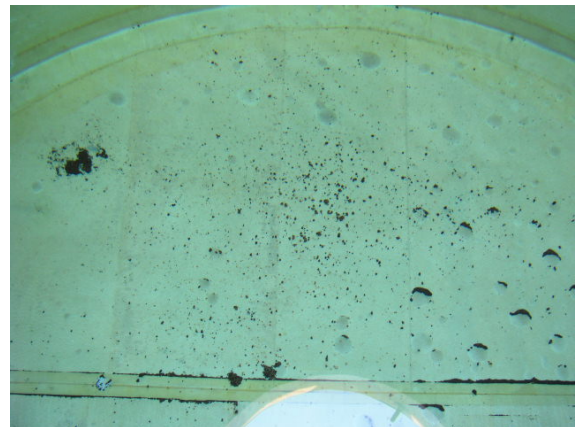
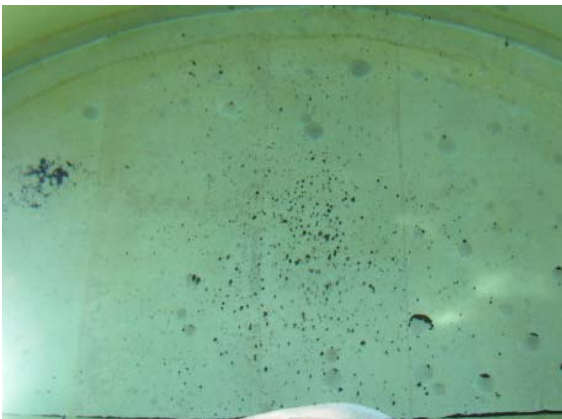
Elevated reservoir



Picture taken 4/5/2005



Picture taken 4/28/2005



In 23 days, rust sedimentation decreased as well as sludge.

| Elevated reservoir | | | | |
|--|---------------------|-------------------|----------------------------|------------------------------------|
| Date | Outdoor temperature | Water temperature | Saturated-dissolved oxygen | Current Saturated-dissolved oxygen |
| 4/5 | 20°C | 14.5°C | 9.76 mg/L | 10.1 mg/L |
| When the elevated reservoir is left for a period of time, the saturated oxygen is 8 mg/L | | | | |
| 4/12 | 23°C | 16.7°C | 9.37 mg/L | 10.3 mg/L |
| 4/28 | 25°C | 17. 8°C | 9. 18mg/L | 10. 8mg/L |
| | | | | |